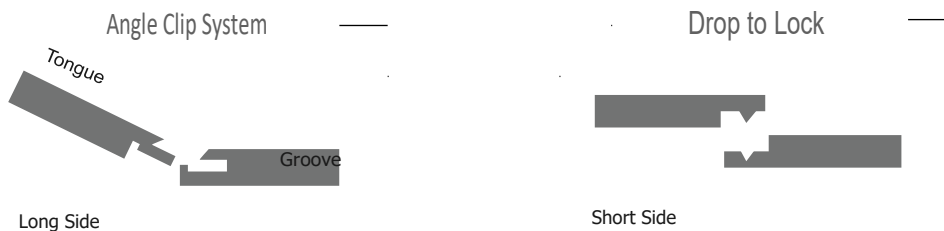




VTB WOOD VENEER FLOORING INSTALLATION INSTRUCTION



INSTALLATION GUIDE

Your new VTB Wood Veneer is the latest generation of high-quality resilient flooring. It has a unique interlocking-edge design for easy installation. Simply follow the steps and you will experience how easily this product is installed in just a few hours. The PU wear layer has millions of ceramic microspheres that make this flooring a very durable and easy to maintain flooring option.

TOOLS AND MATERIALS NEEDED

- Tile saw or cutter
- Hand saw for cutting around irregular shaped objects
- Measuring tape
- 1/8" – 3/8" spacers
- Transition moldings and baseboards
- Rubber mallet
- Pull bar and Tapping block

TRICKS FOR MEASURING

Measure the length and width to determine the square footage of the room. Alcoves or offsets should be measured separately. Purchase at least 10% extra to cover waste, trimming and for future replacement needs.

NOTE: If you have more than one run number, we recommend you install planks from 4 or 5 different cases from different run numbers together. This will limit shade variations.

CAUTION: Do not install this flooring over carpet. This product is not suitable for outdoor use, sunrooms, solariums or saunas. VTB Wood Veneer may warp if subject to excessive heat and may shrink if exposed to excessive cold. We also highly recommend you do not install in rooms or homes in which the temperature is not controlled. Exposure to long term direct sunlight can cause expansion damage to your floor. We strive to maintain strict quality control during the

manufacturing process but we recommend checking all planks to ensure uniform appearance.

PRE-INSTALLATION

Place the VTB Wood Veneer horizontally in the room where it will be installed. It is recommended the room should remain between 60 and 80 degrees Fahrenheit for 48 hours before installation, and during the installation period.

SUBFLOOR PREPARATION AND INSTALLATION

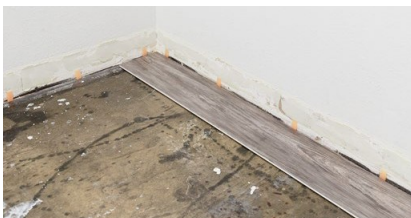
The sub-floor surface must be smooth, dry, clean and solid. Any adhesive residue must be removed to ensure proper installation. The sub-floor should be flat within a tolerance of 1/8" (3mm) over a span of 4 feet. Any unevenness over 1/8" (3mm) must be sanded or filled with a floor leveler. Voids or humps in the sub-floor will prevent the flooring from locking properly. VTB Wood Veneer is water-resistant but any moisture problem (greater than 90%) needs to be corrected prior to installation.

INSTALLATION

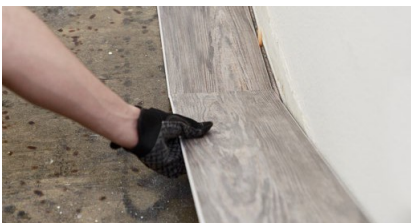
- Installation should begin with a corner and proceed from the wall with the tongue facing away from the wall. Allow a minimum gap of 3/8" (10mm) for product expansion. Transition moldings or baseboards will cover the gap.



- When laying the first row, in a straight line, interlock the short ends by firmly pressing on one corner continuing the pressure moving across the seam to the opposite corner of the drop lock system until you hear it click. Complete the seal by lightly tapping with a rubber mallet. Install sequential planks on the short end and be sure to line up evenly.

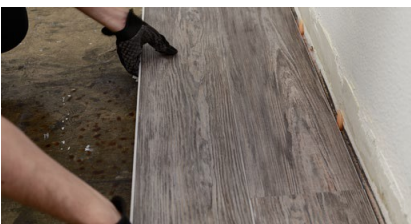


- Keep the seams tight between planks. There should be no visible gaps between the planks. If seams do not appear tight, pull the planks apart immediately and try again.

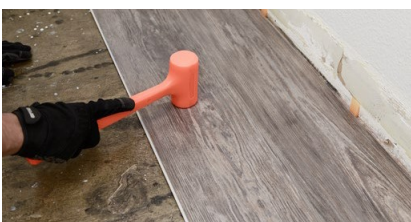


- When installing our VTB Wood Veneer, it is strongly suggested to stagger the rows so that the short edge seams are not in a straight uniform line.

- To start the second row, measure and mark the plank, then use a tile saw/cutter to make the appropriate cuts.



- Interlock the first plank of the second row again at a 15-20 degree angle. You may need to use the pullbar and tapping block to get a flush seal going forward. Now for the next planks, interlock the long side first sliding it to meet the short end of the plank it is connecting to. Lay the plank down overlapping the drop click system and press firmly moving from one corner to the opposite corner until you hear the click. Finish the seal by lightly tapping with a rubber mallet.





- Fitting around irregular objects is very easy to do. Simply make a pattern out of heavy paper to fit around pipes or irregular objects. Place the pattern on the plank and trace. Cut along trace lines using a tile saw/cutter or hand saw, and lay plank.
- Because the VTB Wood Veneer flooring is a floating floor, it is recommended to allow for expansion gaps along each wall, thresholds, around pipes, and other obstacles. To allow for this variation, a 5/16 in. to 3/8 in. (8-12mm) expansion gap should be provided at all walls.

ROUTINE CARE & MAINTENANCE

- Sweep, dust mop or vacuum daily. Do not use vacuums with any type of beater bar assembly.
- Use cleaners safe for wood flooring.



VTB Wood Veneer Click Flooring January 1, 2019

Recommended Maintenance Instructions for VTB Wood Veneer Click Flooring.

Initial Maintenance:

1. After Installation dust mop the floor using a microfiber dust mop to remove any debris from the floor. Sweep and vacuum floor to remove the dirt and heavy particulate, (use a putty knife or scraper to remove sticky build-ups).
2. Place WET FLOOR signs at all entry points to the floor where the cleaning will take place.
3. Thoroughly clean the floor using a neutral wood flooring cleaner. Dilute cleaner according to label directions. Use a white pad on an autoscrubber or 175 rpm machine.

NEVER USE A BLACK PAD ON VTB Wood Veneer Click Flooring.

NOTE: It is important to protect the floor during installation and construction phase. Use a covering such as plain undyed kraft paper to cover the floor if other onsite work is continuing. When heavy fixtures or such are moved over the floor on casters or dollies, the floor should be protected with ¼" or thicker plywood, hardboard or other underlayment material.

DAILY REGULAR MAINTENANCE

1. Sweep and/or dust mop the floor daily to remove surface dirt. Use walk-off mats that are as wide as the doorway and long enough to trap dirt and moisture. Remember to clean walk-off mats regularly.
2. Damp mop. Strong alkaline detergents or cleaning agents containing solvents should not be used. Remember always to rinse with clean water. Use a white pad on auto scrubber or 175 rpm machine.

Periodic Maintenance:

1. Clean heavily soiled areas with a concentrated wood cleaning solution which should be left to work on the floor for a few minutes before scrubbing. High pressure cleaning is an alternative method to scrubbing provided the excess water can be vacuumed up.